



## DOORS



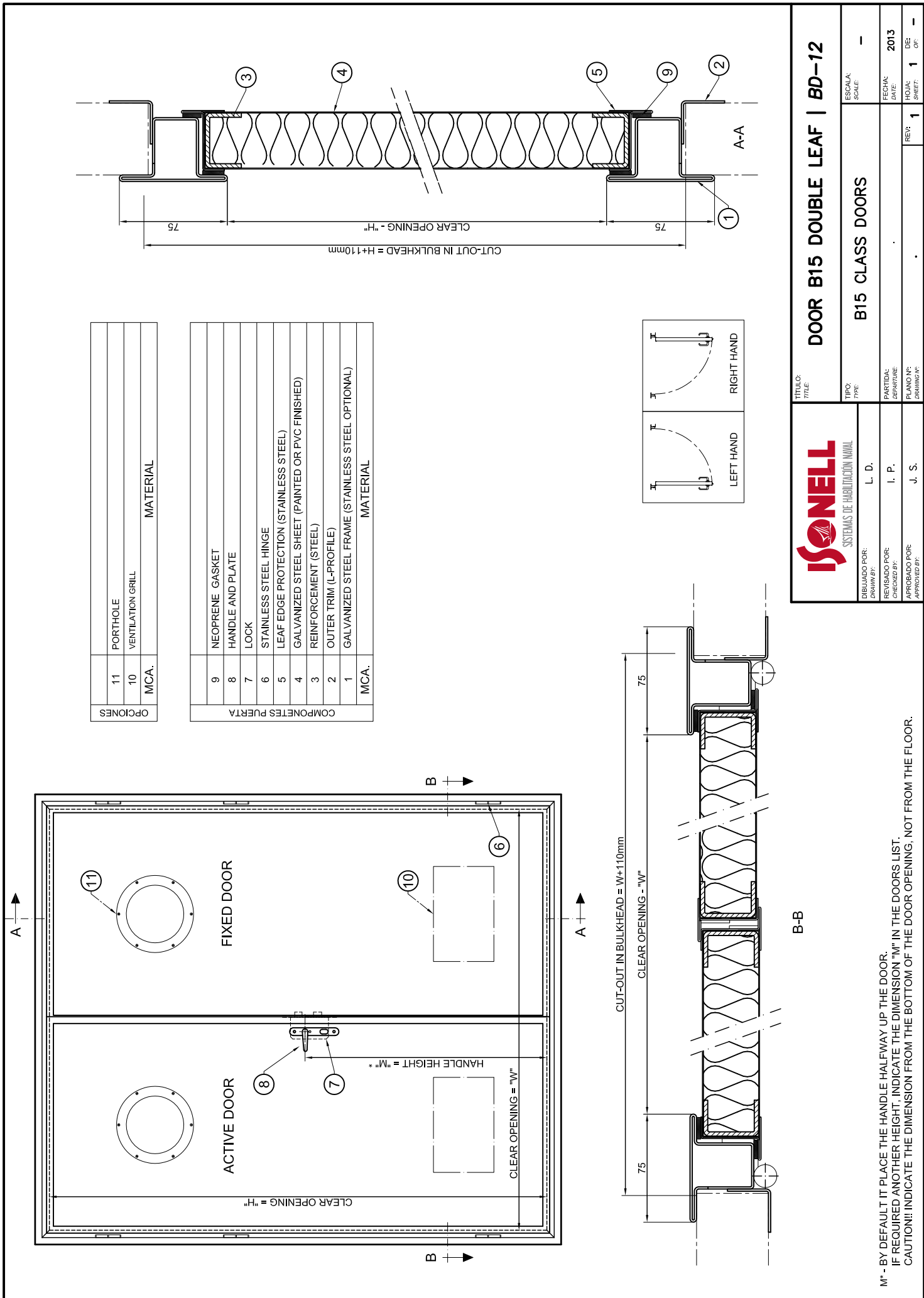
### TZD DOOR (DOUBLE DOOR)

The purpose of this door is to get the same classification as the bulkhead where it has to be mounted, obtaining a B-15 class room or bulkhead with a double-leaf door.

The door is made up of the stainless steel or painted steel frame, the leaf and corresponding closing and hanging devices, handle and lock made of stainless steel or chrome plated brass, hinge and as an option: door closing device, louver, outlet panel, top-panel built-in in the frame, cylinders with actuator mechanism, etc.

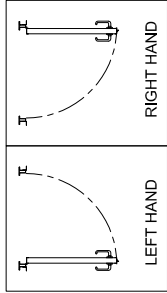
Like the rest of the products, the available colors and finishes may be the same as for the bulkhead where it is mounted or different according to color chart.

DESCRIPTION	ISONELL TZD DOOR
Class:	B-15 / B-0
Thickness:	43mm
Core material:	Mineral wool
Covering:	Galvanized steel (with PVC/painted) or stainless steel plating
Frame:	Stainless steel or lacquered galvanized steel
Standard dimensions:	2130 x 1800mm
Options:	Louver and Window / Porthole
Approx. weight:	80kg



OPCIONES		MATERIAL
11	PORTHOLE	
10	VENTILATION GRILL	
MCA.		

COMPONENTES PUERTA		MATERIAL
9	NEOPRENE GASKET	
8	HANDLE AND PLATE	
7	LOCK	
6	STAINLESS STEEL HINGE	
5	LEAF EDGE PROTECTION (STAINLESS STEEL)	
4	GALVANIZED STEEL SHEET (PAINTED OR PVC FINISHED)	
3	REINFORCEMENT (STEEL)	
2	OUTER TRIM (L-PROFILE)	
1	GALVANIZED STEEL FRAME (STAINLESS STEEL OPTIONAL)	
MCA.		



**ISONELL**  
SISTEMAS DE HABILITACION NAVAL

**DOOR B15 DOUBLE LEAF | BD-12**

TITULO: TITLE:		ESCALA: SCALE:	
DISEÑADO POR: DRAWN BY:		TIPO: TYPE:	
REVISADO POR: CHECKED BY:		B15 CLASS DOORS	
APROBADO POR: APPROVED BY:		REV: 1	
PARTIDA: LABORATORIO:		FECHA: DATE:	
PLANO Nº: DRAWING Nº:		H.O.A: DIB:	
		2013	
		1 OF	

M\* - BY DEFAULT IT PLACE THE HANDLE HALF-WAY UP THE DOOR.  
 IF REQUIRED ANOTHER HEIGHT, INDICATE THE DIMENSION "M" IN THE DOORS LIST.  
 CAUTION!! INDICATE THE DIMENSION FROM THE BOTTOM OF THE DOOR OPENING, NOT FROM THE FLOOR.