



DOORS



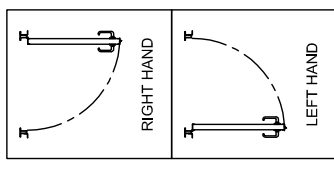
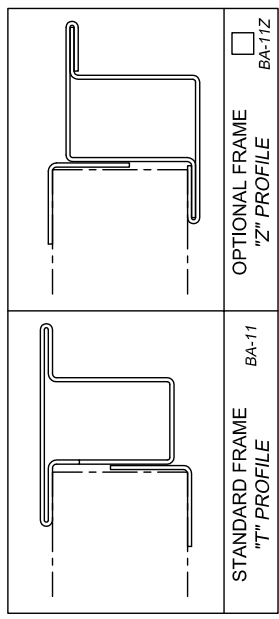
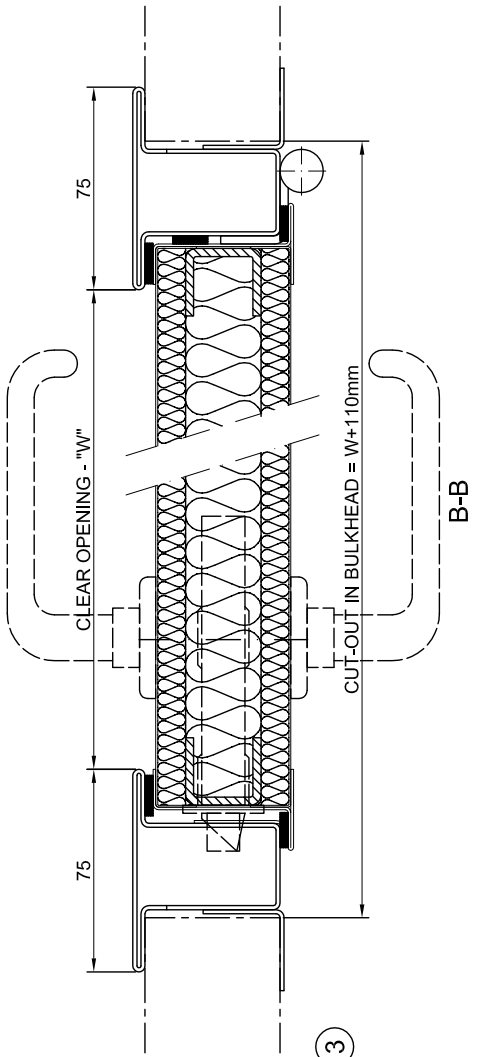
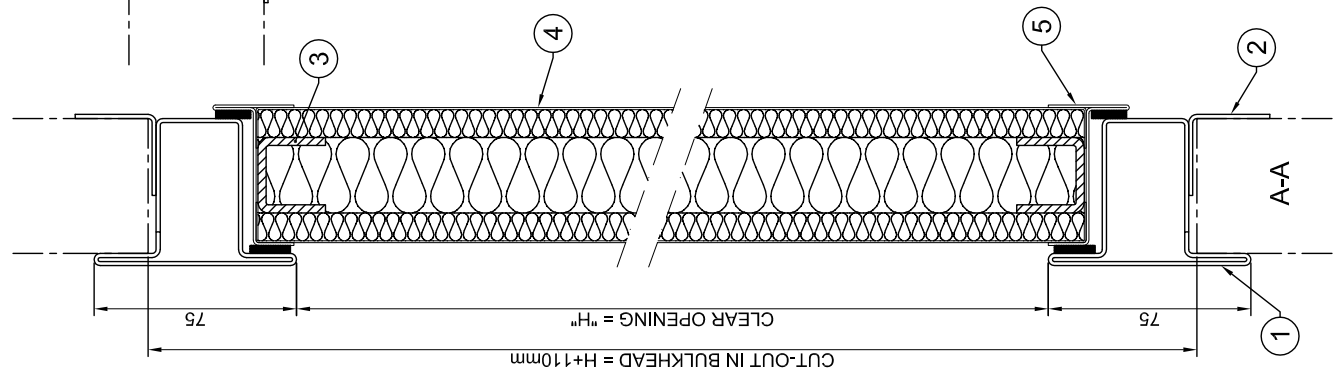
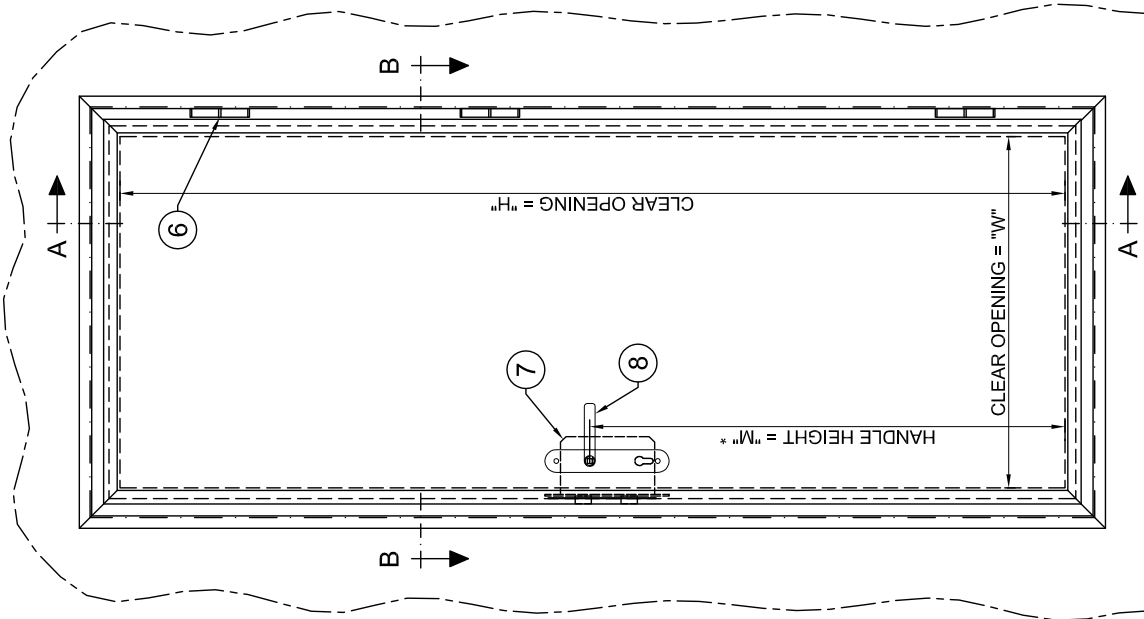
ATZ/ALZ DOOR (ACOUSTIC DOOR)

The purpose of this door is to get the same class as the bulkhead where it has to be mounted, obtaining an acoustic B-15 class room or bulkhead.

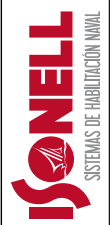
The door is made up of the stainless steel or painted steel frame, the leaf and its corresponding closing and hanging devices, stainless steel or chrome-plated brass handle and lock, hinge and, optionally, door closing device, louver, outlet panel, top-panel built-in in frame, cylinders with actuator mechanism, etc.

Like the rest of the products, the available colors and finishes might be the same as for the bulkhead where it is mounted or different according to color chart.

DESCRIPTION	ATZ/ALZ DOOR (ACOUSTIC DOOR)
Class:	B-15 / B-0
Acoustic insulation:	Rw = De 38 a 49 dB (dependiendo de la rejilla y la cerradura)
Thickness:	50mm
Core material:	Mineral wool
Covering:	Galvanized steel (with PVC or painted) or stainless steel plating
Frame:	Stainless steel or lacquered galvanized steel
Standard dimensions:	2000 x 900mm
Options:	Porthole with window Z-shaped louver
Approx. weight:	47 kg/m ²

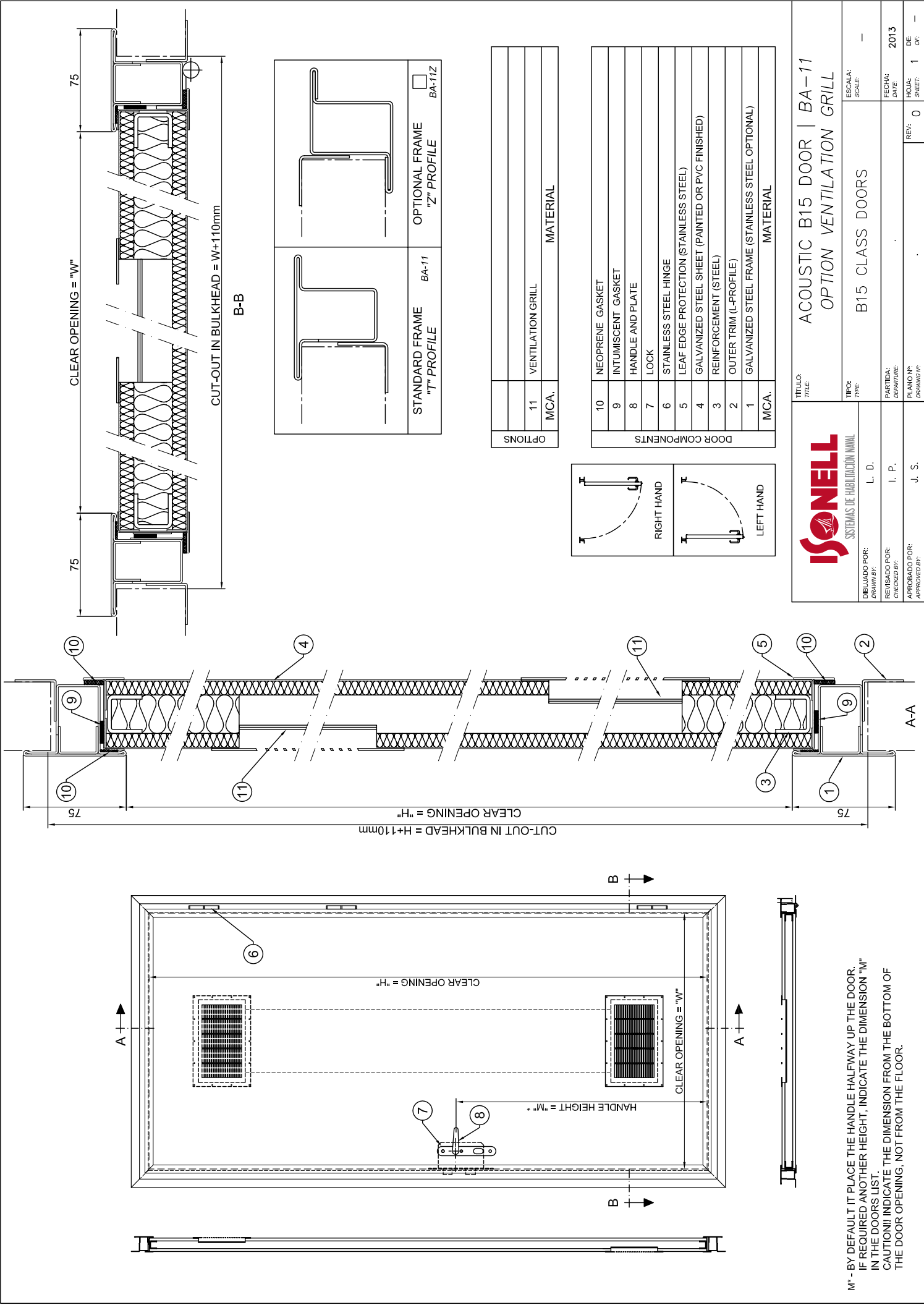


8	HANDLE AND PLATE	
7	LOCK	
6	STAINLESS STEEL HINGE	
5	LEAF EDGE PROTECTION (STAINLESS STEEL)	
4	GALVANIZED STEEL SHEET (PAINTED OR PVC FINISHED)	
3	REINFORCEMENT (STEEL)	
2	OUTER TRIM (L-PROFILE)	
1	GALVANIZED STEEL FRAME (STAINLESS STEEL OPTIONAL)	
MCA.		MATERIAL



TITULO: TITLE:		ACOUSTIC B15 DOOR BA-11 STANDARD FRAME	
TIPO: TYPE:		B15 CLASS DOORS	
DIBUJADO POR: DRAWN BY:		J. S.	
REVISADO POR: CHECKED BY:		I. P.	
APROBADO POR: APPROVED BY:		J. S.	
ESCALA: SCALE:		-	
FECHA: DATE:		2013	
PARTIDA: DEPARTAMENT:		REV: 0	
PLANO Nº: DRAWING Nº:		HOUR: 1	
		DE: -	
		OF: -	

M* - BY DEFAULT IT PLACE THE HANDLE HALFWAY UP THE DOOR.
 IF REQUIRED ANOTHER HEIGHT, INDICATE THE DIMENSION "M" IN THE DOORS LIST.
 CAUTION!! INDICATE THE DIMENSION FROM THE BOTTOM OF THE DOOR OPENING, NOT FROM THE FLOOR.



ISONELL
SISTEMAS DE HABILITACION NAVAL

DIBUJADO POR: L. D.
 REVISADO POR: I. P.
 CHECKED BY: J. S.
 APROBADO POR:
 APPROVED BY:

TITULO: ACOUSTIC B15 DOOR | BA-11
 TITLE: OPTION VENTILATION GRILL

ESCALA: B15 CLASS DOORS
 SCALE: -

FECHA: 2013
 DATE: DE:
 HOJA: 1
 SHEET: OF: -

REV: 0

M* - BY DEFAULT IT PLACE THE HANDLE HALFWAY UP THE DOOR.
 IF REQUIRED ANOTHER HEIGHT, INDICATE THE DIMENSION "M"
 IN THE DOORS LIST.
 CAUTION! INDICATE THE DIMENSION FROM THE BOTTOM OF
 THE DOOR OPENING, NOT FROM THE FLOOR.

DOOR COMPONENTS	
10	NEOPRENE GASKET
9	INTUMESCENT GASKET
8	HANDLE AND PLATE
7	LOCK
6	STAINLESS STEEL HINGE
5	LEAF EDGE PROTECTION (STAINLESS STEEL)
4	GALVANIZED STEEL SHEET (PAINTED OR PVC FINISHED)
3	REINFORCEMENT (STEEL)
2	OUTER TRIM (L-PROFILE)
1	GALVANIZED STEEL FRAME (STAINLESS STEEL OPTIONAL)
MCA.	MATERIAL

OPTIONS	
11	VENTILATION GRILL
MCA.	MATERIAL

OPTIONAL FRAME "Z" PROFILE	BA-11	OPTIONAL FRAME "Z" PROFILE	BA-11Z